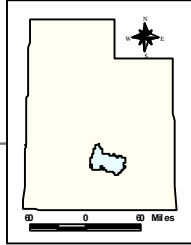


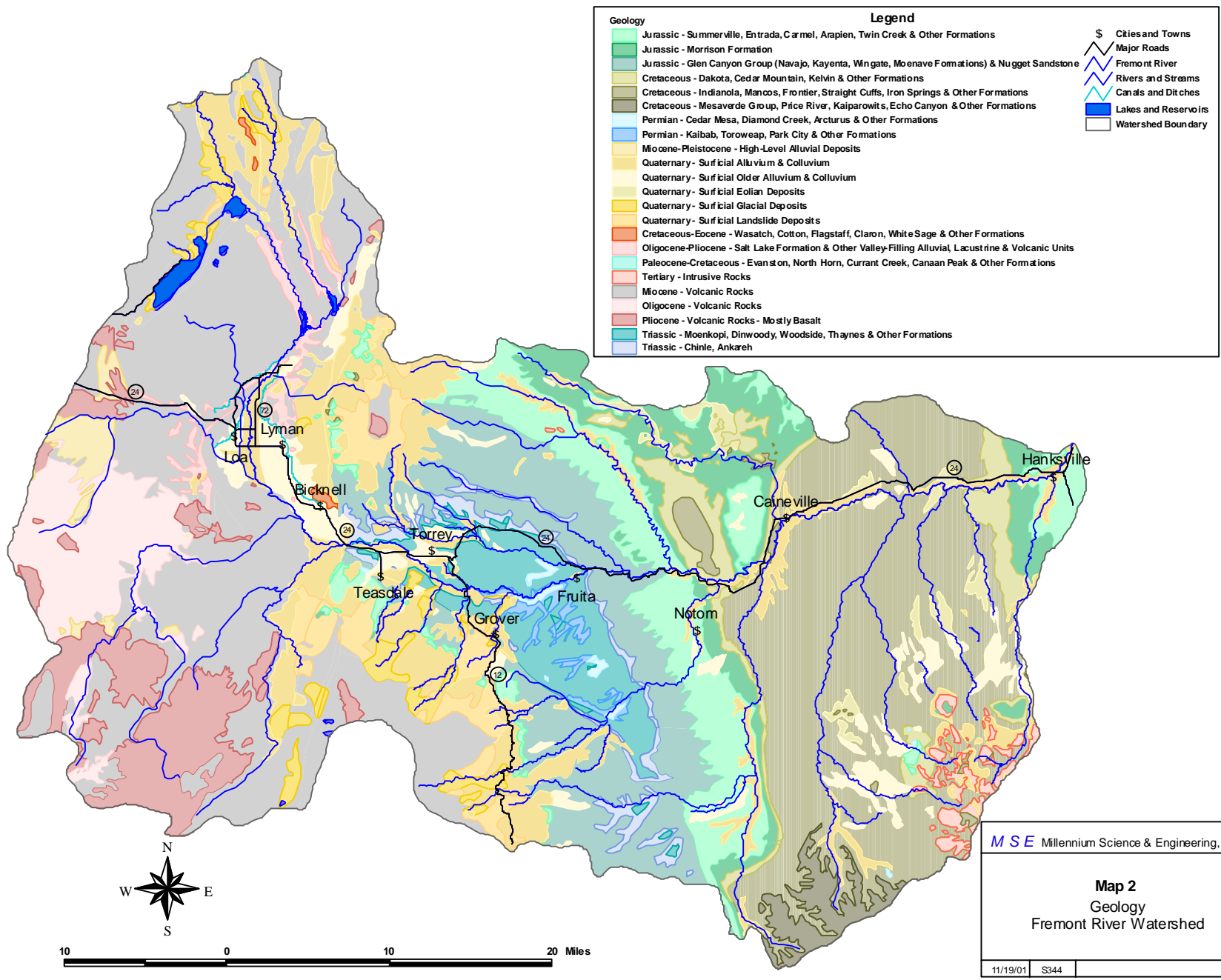
Legend

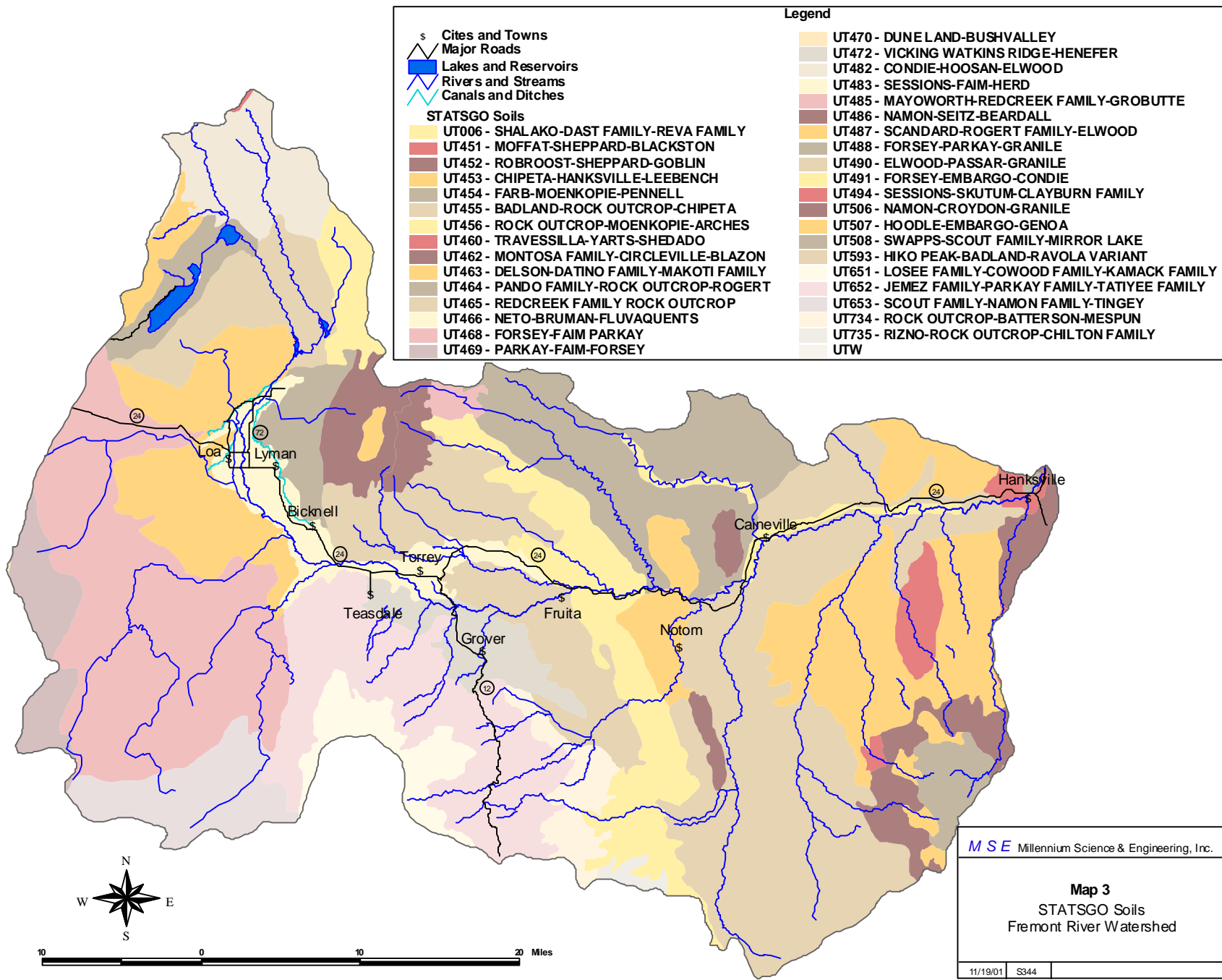
- Fremont River
- Rivers and Streams
- Canals and Ditches
- Lakes and Reservoirs
- Major Roads
- Cities and Towns
- Counties
- Watershed Boundary 1407003



MSE Millennium Science & Engineering, Inc.

Map 1
General Overview
Fremont River Watershed



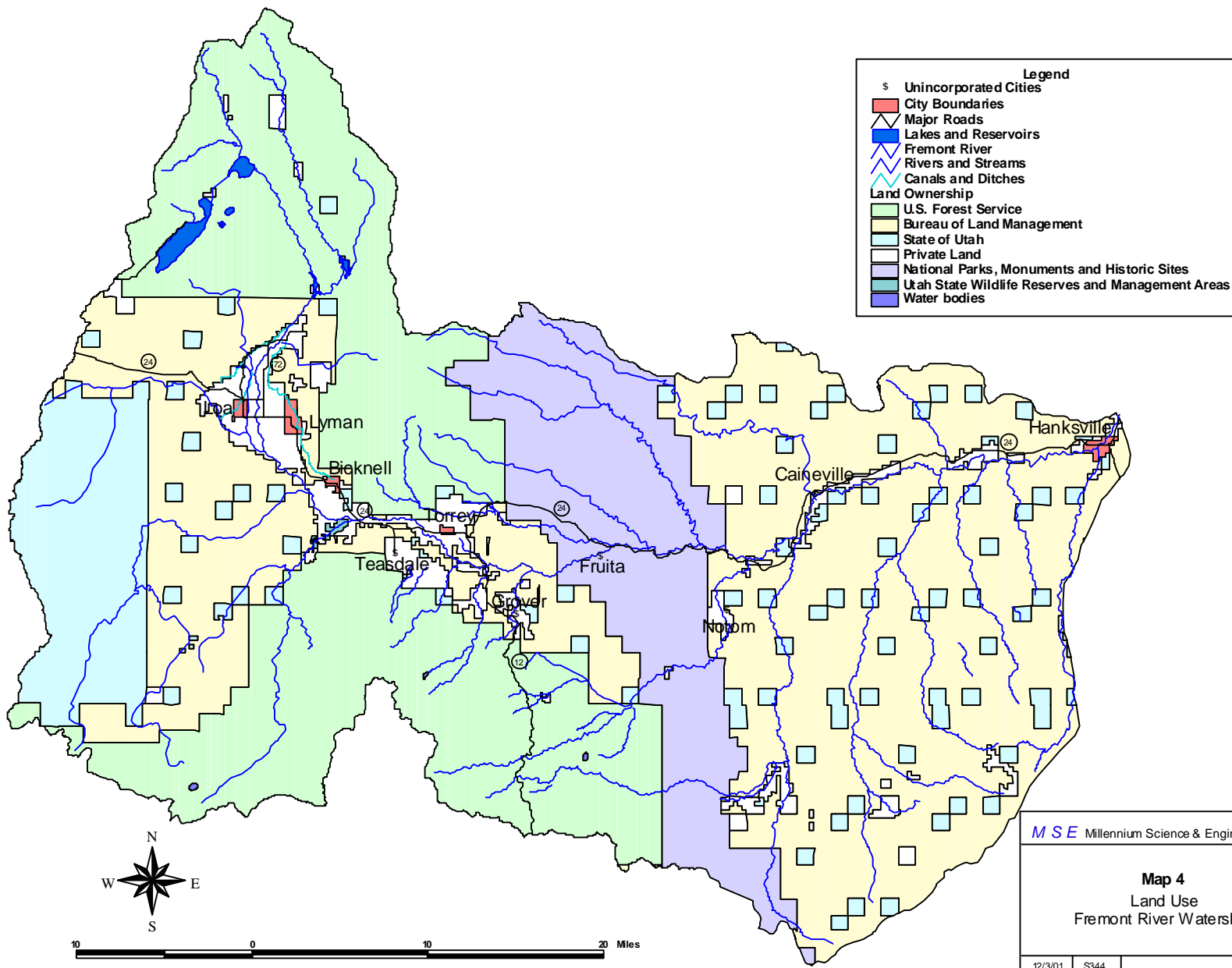


	Cites and Towns		UT470 - DUNE LAND-BUSHVALLEY
	Major Roads		UT472 - VICKING WATKINS RIDGE-HENEFER
	Lakes and Reservoirs		UT482 - CONDIE-HOOSAN-ELWOOD
	Rivers and Streams		UT483 - SESSIONS-FAIM-HERD
	Canals and Ditches		UT485 - MAYOWORTH-REDCREEK FAMILY-GROBUTTE
STATSGO Soils			UT486 - NAMON-SEITZ-BEARDALL
	UT006 - SHALAKO-DAST FAMILY-REVA FAMILY		UT487 - SCANDARD-ROGERT FAMILY-ELWOOD
	UT451 - MOFFAT-SHEPPARD-BLACKSTON		UT488 - FORSEY-PARKAY-GRANILE
	UT452 - ROBROOST-SHEPPARD-GOBLIN		UT490 - ELWOOD-PASSAR-GRANILE
	UT453 - CHIPETA-HANKSVILLE-LEEBENCH		UT491 - FORSEY-EMBARGO-CONDIE
	UT454 - FARB-MOENKOPIE-PENNELL		UT494 - SESSIONS-SKUTUM-CLAYBURN FAMILY
	UT455 - BADLAND-ROCK OUTCROP-CHIPETA		UT506 - NAMON-CROYDON-GRANILE
	UT456 - ROCK OUTCROP-MOENKOPIE-ARCHES		UT507 - HOODLE-EMBARGO-GENOA
	UT460 - TRAVESSILLA-YARTS-SHEDADO		UT508 - SWAPPS-SCOUT FAMILY-MIRROR LAKE
	UT462 - MONTOSA FAMILY-CIRCLEVILLE-BLAZON		UT593 - HIKO PEAK-BADLAND-RAVOLA VARIANT
	UT463 - DELSON-DATINO FAMILY-MAKOTI FAMILY		UT651 - LOSEE FAMILY-COWOOD FAMILY-KAMACK FAMILY
	UT464 - PANDO FAMILY-ROCK OUTCROP-ROGERT		UT652 - JEMEZ FAMILY-PARKAY FAMILY-TATIYEE FAMILY
	UT465 - REDCREEK FAMILY ROCK OUTCROP		UT653 - SCOUT FAMILY-NAMON FAMILY-TINGEY
	UT466 - NETO-BRUMAN-FLUVAQUENTS		UT734 - ROCK OUTCROP-BATTERSON-MESPUN
	UT468 - FORSEY-FAIM PARKAY		UT735 - RIZNO-ROCK OUTCROP-CHILTON FAMILY
	UT469 - PARKAY-FAIM-FORSEY		UTW

MSE Millennium Science & Engineering, Inc.

Map 3
 STATSGO Soils
 Fremont River Watershed

11/19/01 S344



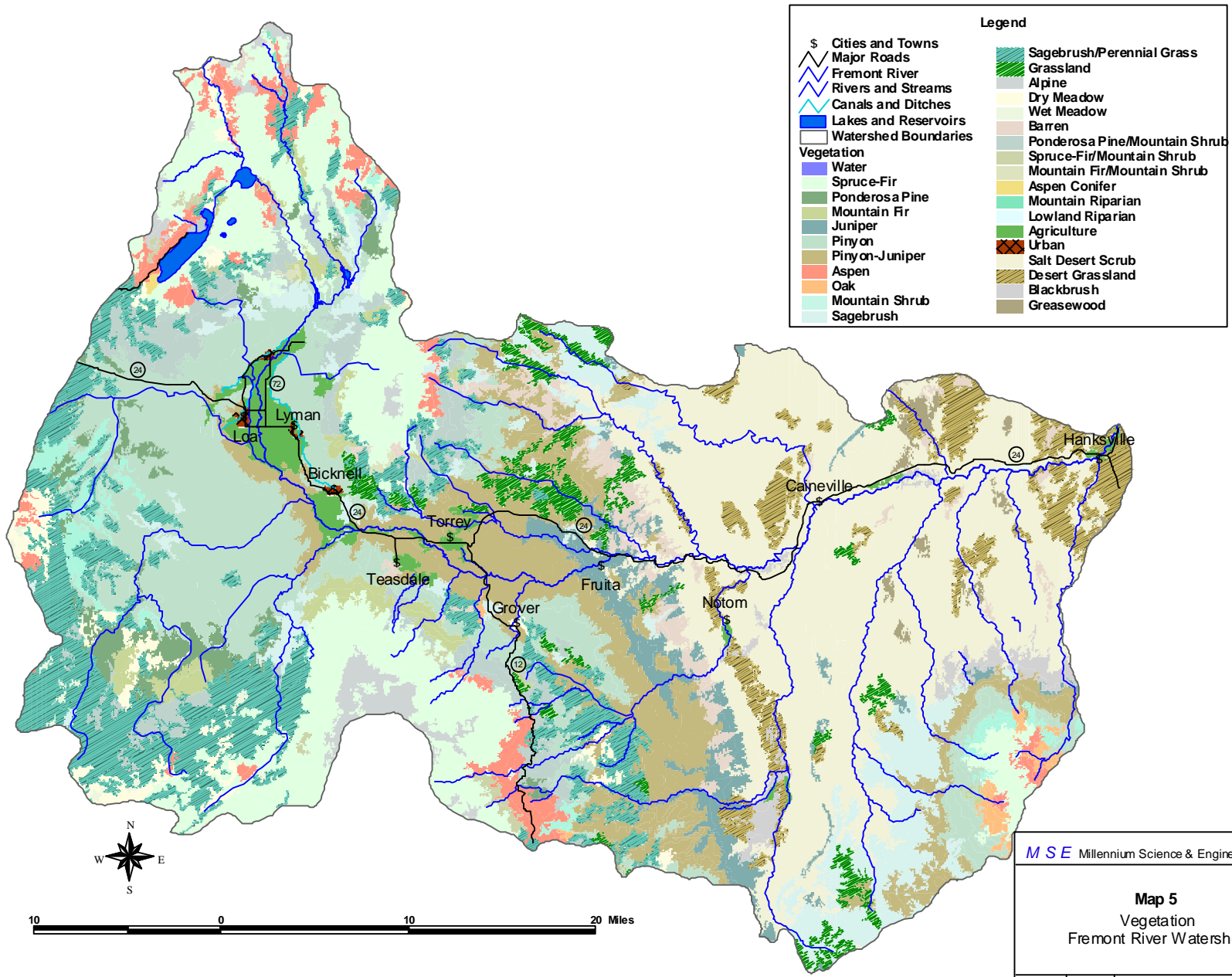
Legend

- Unincorporated Cities
- City Boundaries
- Major Roads
- Lakes and Reservoirs
- Fremont River
- Rivers and Streams
- Canals and Ditches
- Land Ownership
 - U.S. Forest Service
 - Bureau of Land Management
 - State of Utah
 - Private Land
 - National Parks, Monuments and Historic Sites
 - Utah State Wildlife Reserves and Management Areas
 - Water bodies

MSE Millennium Science & Engineering, Inc.

Map 4
Land Use
Fremont River Watershed

12/3/01	S344
---------	------



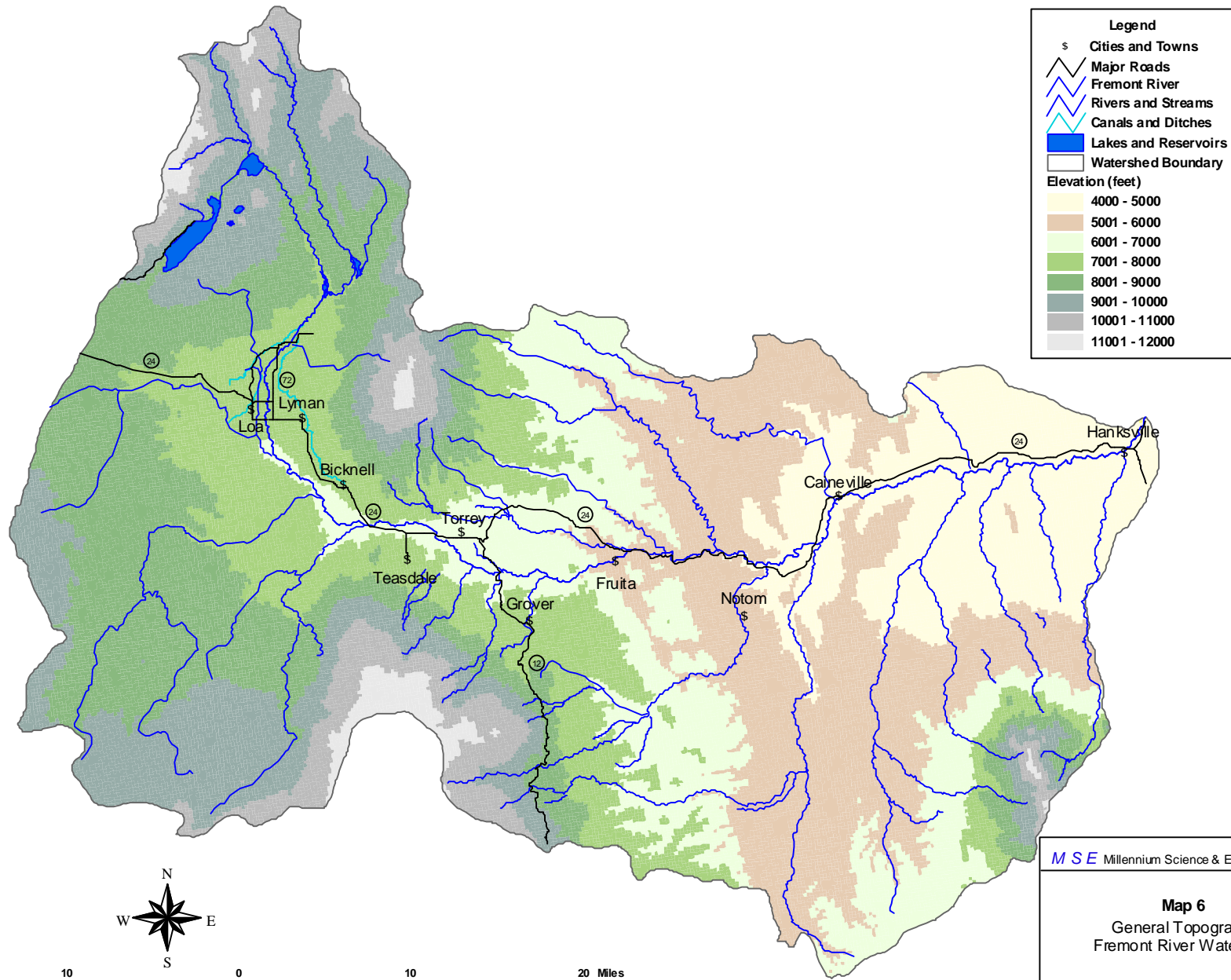
Legend

§ Cities and Towns	Sagebrush/Perennial Grass
⚡ Major Roads	Grassland
⚡ Fremont River	Alpine
⚡ Rivers and Streams	Dry Meadow
⚡ Canals and Ditches	Wet Meadow
⚡ Lakes and Reservoirs	Barren
⚡ Watershed Boundaries	Ponderosa Pine/Mountain Shrub
Vegetation	Spruce-Fir/Mountain Shrub
Water	Mountain Fir/Mountain Shrub
Spruce-Fir	Aspen Conifer
Ponderosa Pine	Mountain Riparian
Mountain Fir	Lowland Riparian
Juniper	Agriculture
Pinyon	Urban
Pinyon-Juniper	Salt Desert Scrub
Aspen	Desert Grassland
Oak	Blackbrush
Mountain Shrub	Greasewood
Sagebrush	

MSE Millennium Science & Engineering, Inc.

Map 5
Vegetation
Fremont River Watershed

11/19/01 | S344



Legend

- \$ Cities and Towns
- Major Roads
- Fremont River
- Rivers and Streams
- Canals and Ditches
- Lakes and Reservoirs
- Watershed Boundary

Elevation (feet)

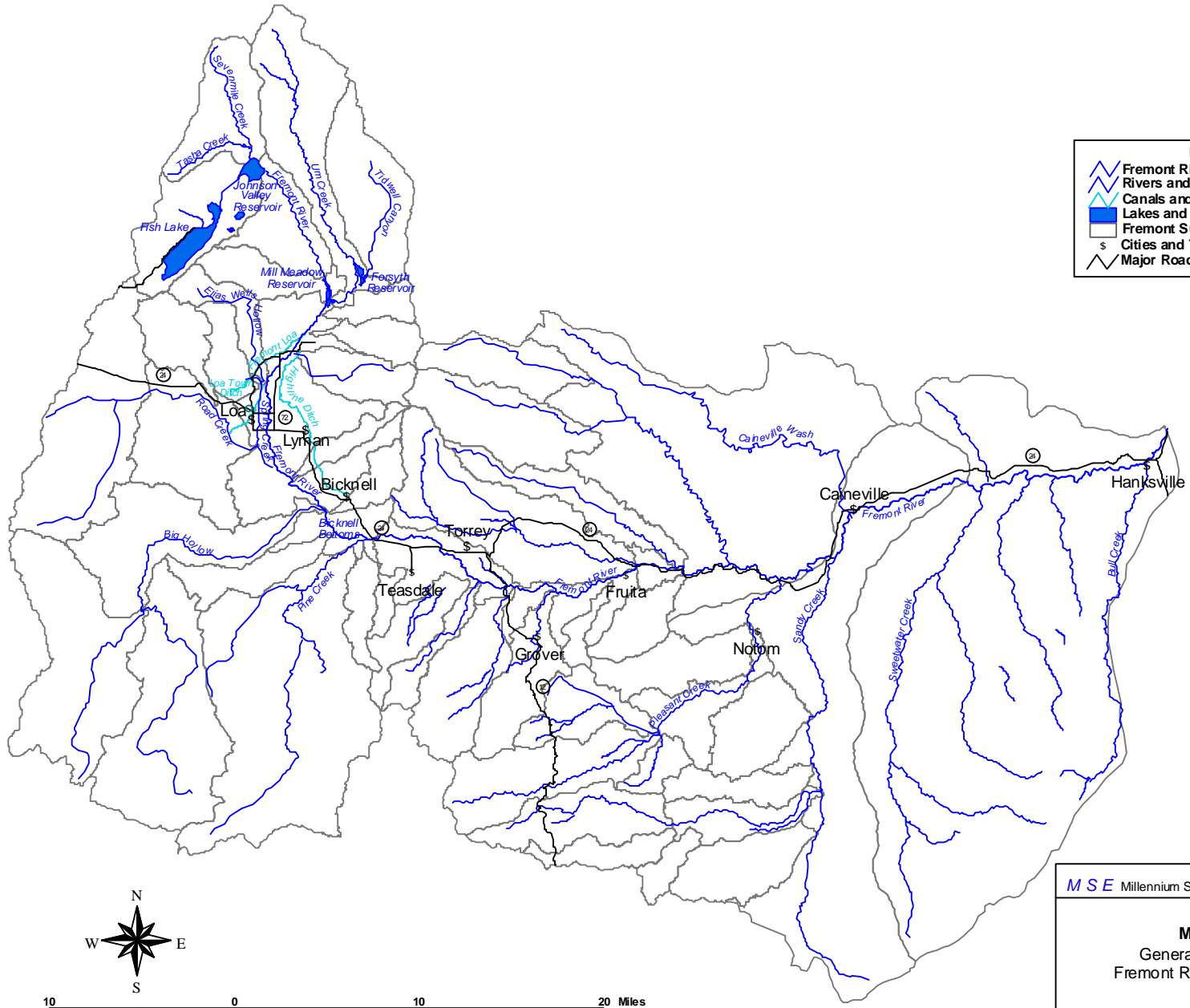
- 4000 - 5000
- 5001 - 6000
- 6001 - 7000
- 7001 - 8000
- 8001 - 9000
- 9001 - 10000
- 10001 - 11000
- 11001 - 12000



MSE Millennium Science & Engineering, Inc.

Map 6
General Topography
Fremont River Watershed

11/19/01 | S344



Legend

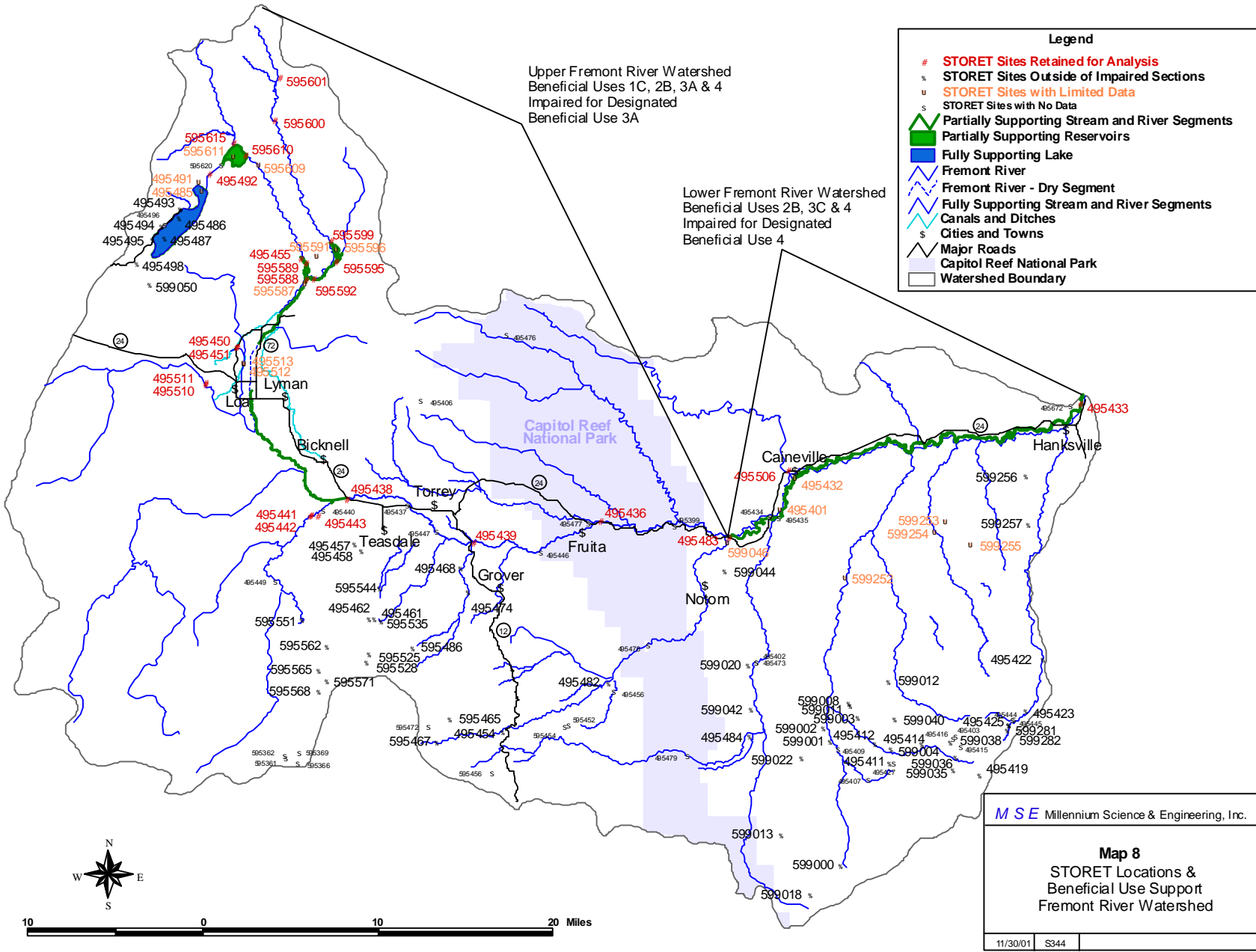
- Fremont River
- Rivers and Streams
- Canals and Ditches
- Lakes and Reservoirs
- Fremont Subwatershed Boundaries
- Cities and Towns
- Major Roads

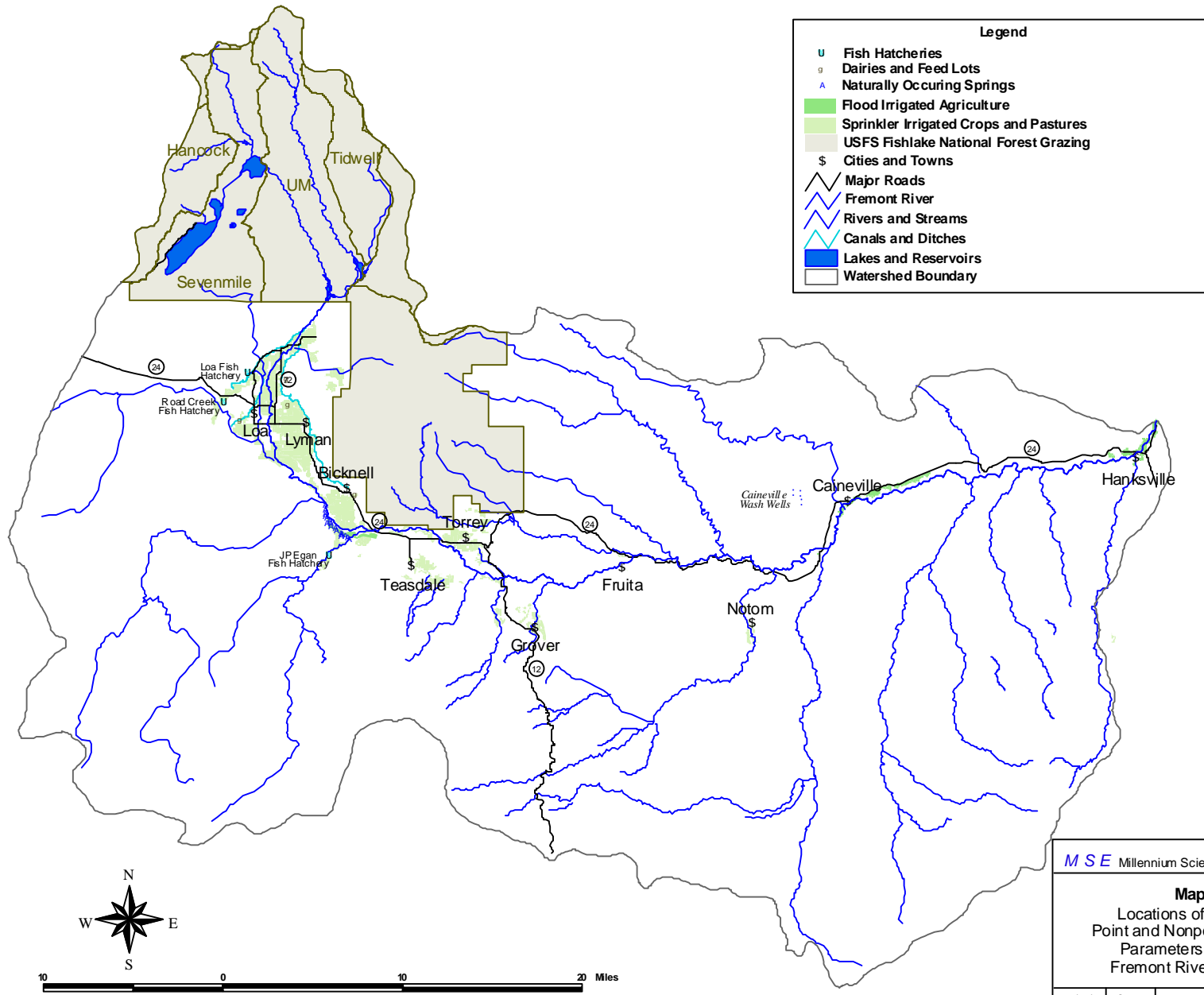


MSE Millennium Science & Engineering, Inc.

Map 7
General Hydrology
Fremont River Watershed

11/19/01 S344





Legend

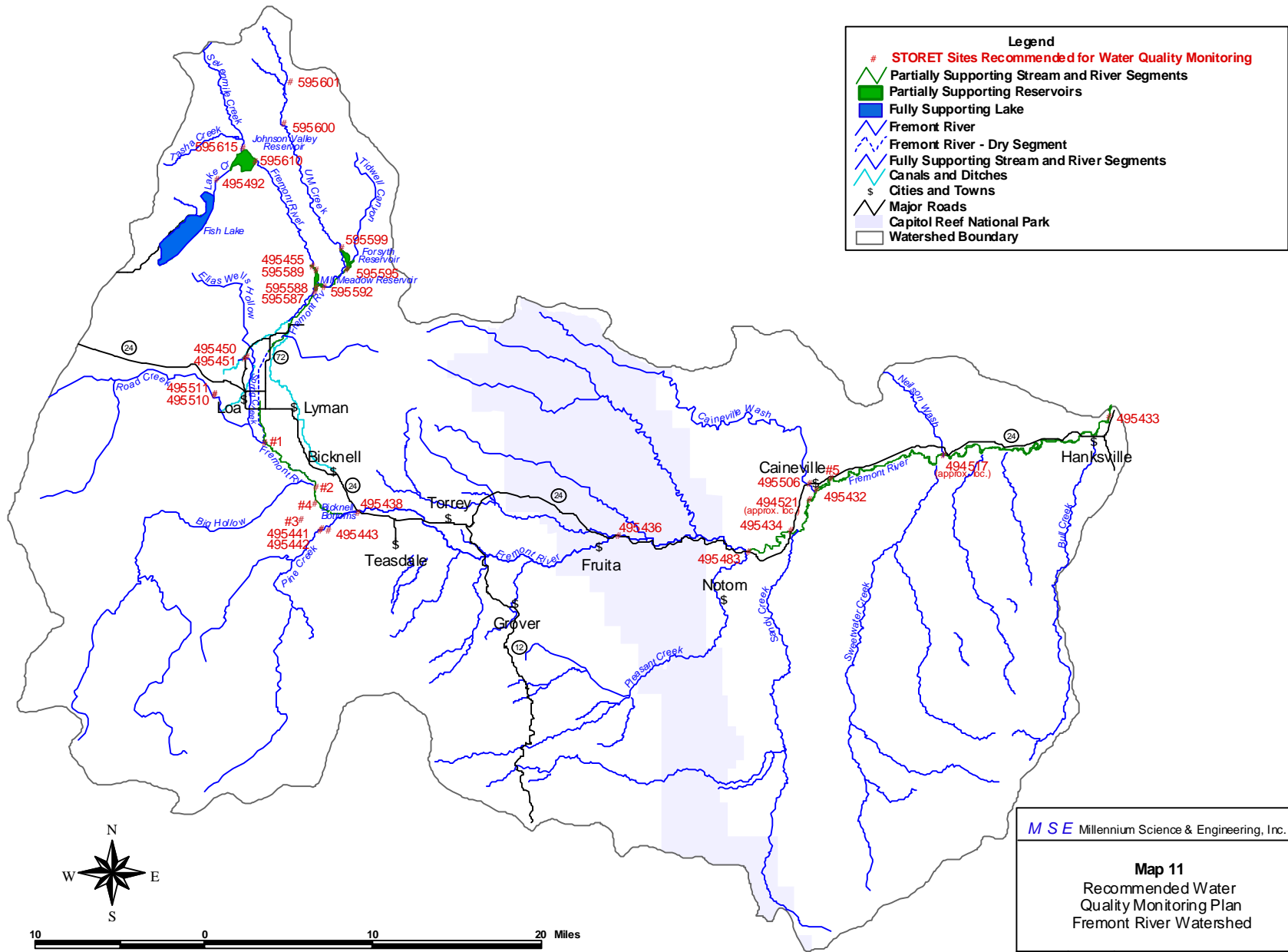
- U Fish Hatcheries
- g Dairies and Feed Lots
- A Naturally Occuring Springs
- Flood Irrigated Agriculture
- Sprinkler Irrigated Crops and Pastures
- USFS Fishlake National Forest Grazing
- \$ Cities and Towns
- Major Roads
- Fremont River
- Rivers and Streams
- Canals and Ditches
- Lakes and Reservoirs
- Watershed Boundary



MSE Millennium Science & Engineering, Inc.

Map 9
 Locations of Significant
 Point and Nonpoint Sources of
 Parameters of Concern
 Fremont River Watershed

03/29/01	S344	
----------	------	--



MSE Millennium Science & Engineering, Inc.

Map 11
Recommended Water Quality Monitoring Plan
Fremont River Watershed

228/02 S344